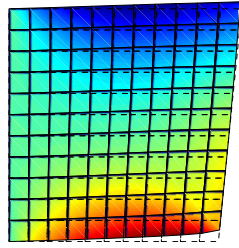
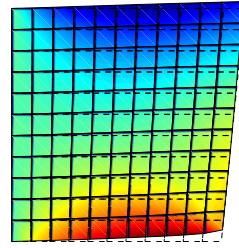


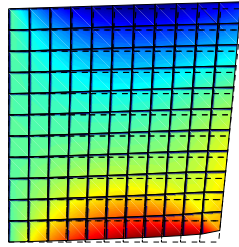
## More Examples of Extremal Rays \*



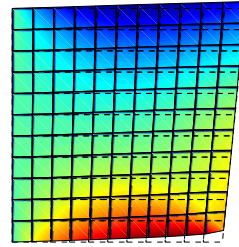
(a)



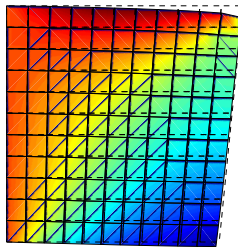
(b)



(c)



(d)



(e)

Figure 1: Extremal rays of wedged configurations of the linear elastic body.

---

\*This note collects supplementary materials of the algorithm proposed in the article: Fujita, R., Kanno, Y., “Enumeration of all wedged equilibrium configurations in contact problem with Coulomb friction,” *Computer Methods in Applied Mechanics and Engineering*, to appear. `c:/doc/contact/wedge/example/eva2workspace/tex/`

Corresponding author: Yoshihiro Kanno

Department of Mathematical Informatics, Graduate School of Information Science and Technology, University of Tokyo, Bunkyo, Tokyo 113-8656, Japan. E-mail: `kanno@mist.i.u-tokyo.ac.jp`.